

mAI Companion®

AI-based assistance for EUS
of the pancreas

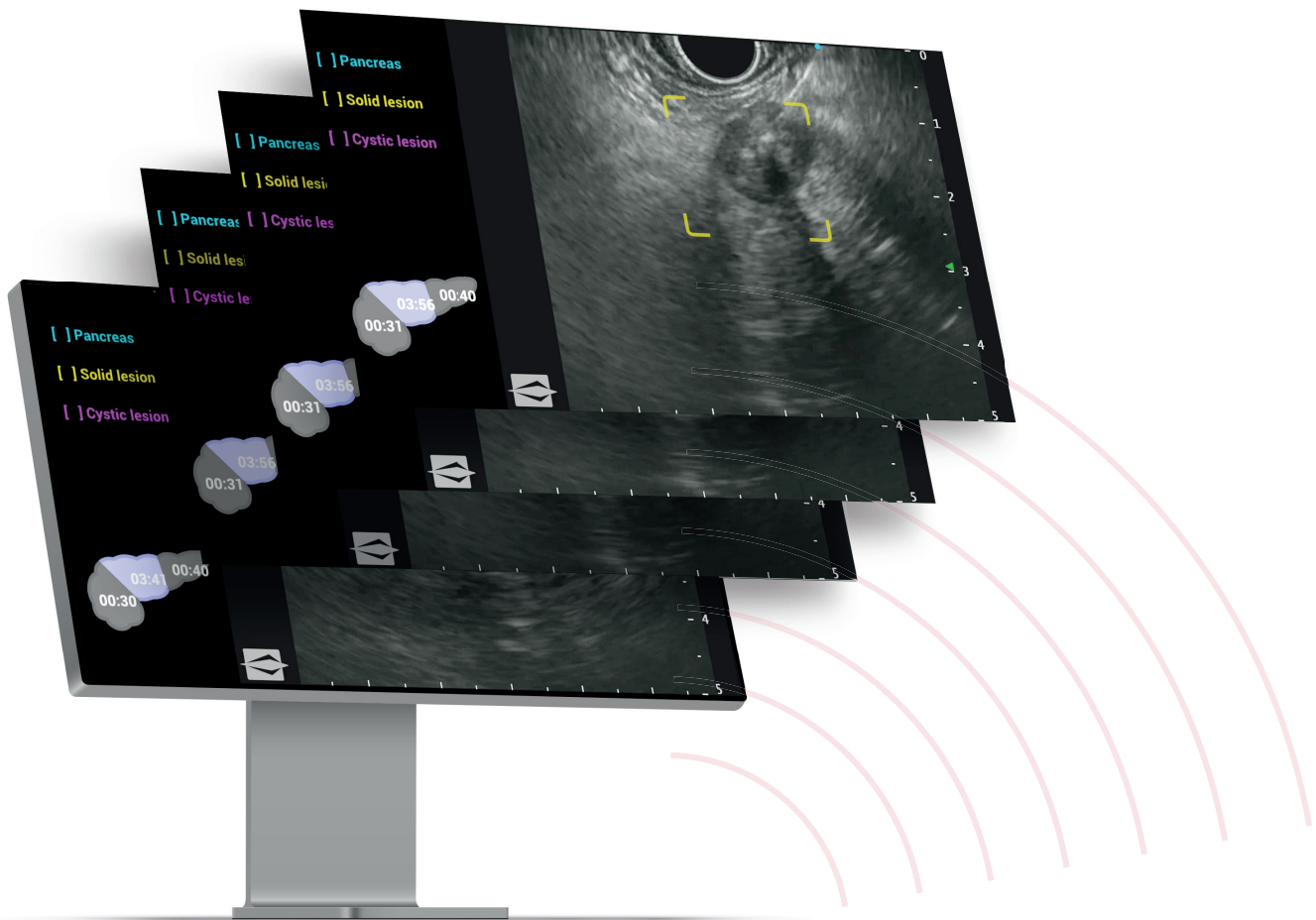
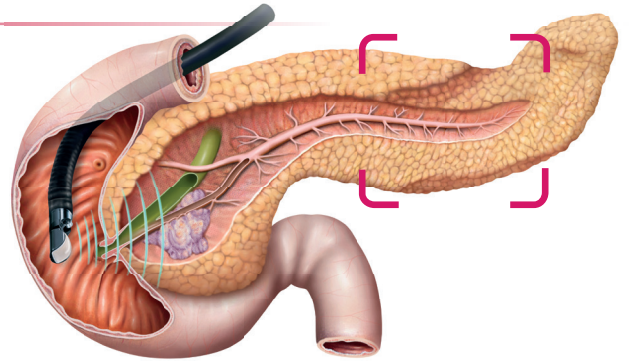


- ✓ Unique Innovation
- ✓ AI-powered Solution
- ✓ Smart Simplicity

*Your Partner in
Gastroenterology*

mAI Companion® - Innovation in EUS

Endoscopic ultrasound is essential for diagnosing and managing **pancreatic diseases**, providing **high-resolution images** and enabling **fine-needle biopsies**. However, it requires precise endoscope control and accurate image interpretation.



mAI Companion® represents a significant advancement in the field of gastroenterology, helping to elevate the standard of care for patients with pancreatic conditions.

The existing workflow remains untouched, ensuring seamless integration. The user interface is simple yet effective, providing a smooth experience.

AI-based assistance for EUS of the pancreas

mAI Companion® is **hardware-independent**, functioning on an **additional screen**.
The small form factor allows for **easy integration** into the existing EUS setup.



Procedure assistance

- Pancreatic tissue
- Solid lesions
- Cystic lesions



Completeness tracking

See the time spent observing head, body and tail regions at a single glance



Picture & video recording

Record pictures and videos and use them in your reports



mAI Companion®

Your everyday EUS support



Coming soon

Please contact your Medi-Globe representative for details.

- ✓ High detection rate for different types of lesions
- ✓ Millions of frames analysed and annotated
- ✓ Multicentric training and development data
- ✓ Developed in Europe

Medi-Globe GmbH

Medi-Globe-Straße 1-5
83101 Rohrdorf
Germany
Phone: + 49 (0) 8032 973-379
Fax: + 49 (0) 8032 973-392
Email: sales@medi-globe.de
www.maicompanion.ai



mAI Companion®